



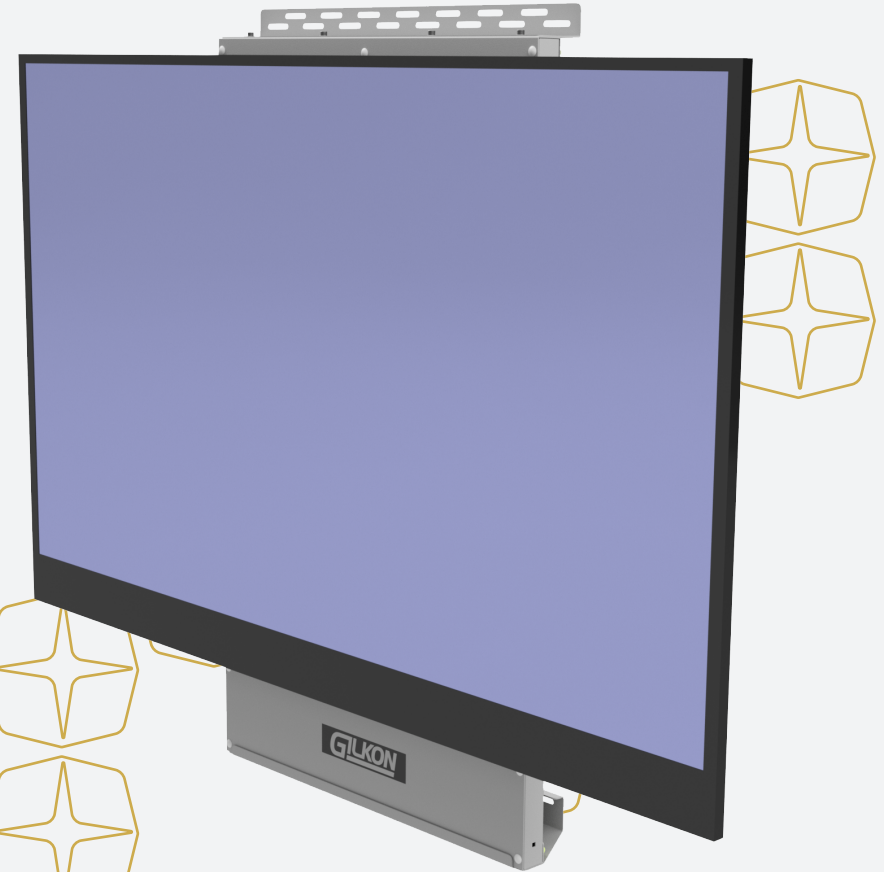
WITH
POWER
LIFT



GILKON

INSTALLATION GUIDE

FP4 WALL MOUNT FOR FLAT PANEL DISPLAY



*AV Monitor screen not included



All specifications are subject to change without notice
© Copyright 2024 OPIE Manufacturing Group PTY Limited. All rights reserved.

WWW.GILKON.COM.AU

GILKON is a part of the OPIE GROUP



OPIEGROUP.COM.AU



[02] 47286111



109 RUSSELL STREET, EMU HEIGHTS NSW 2750



OPIE
MANUFACTURING GROUP

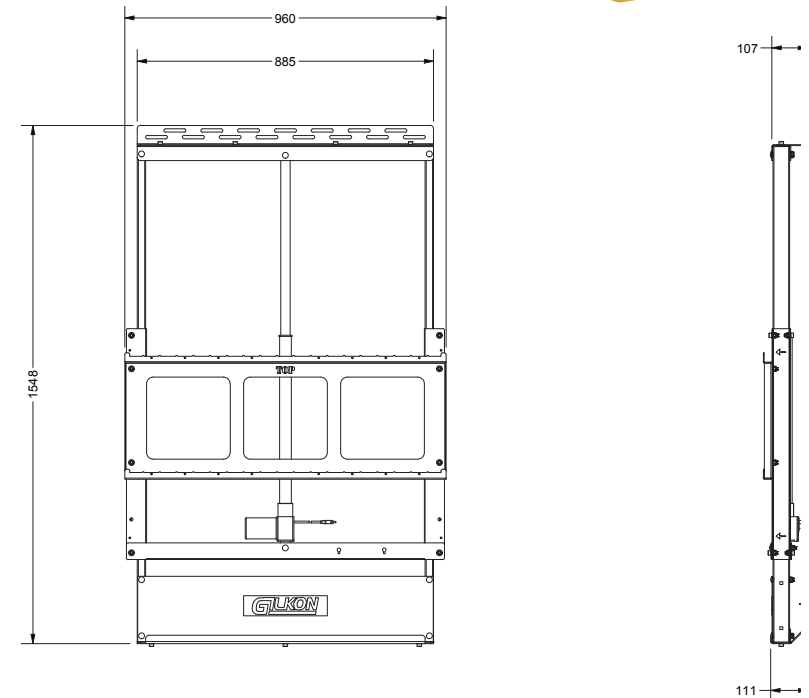
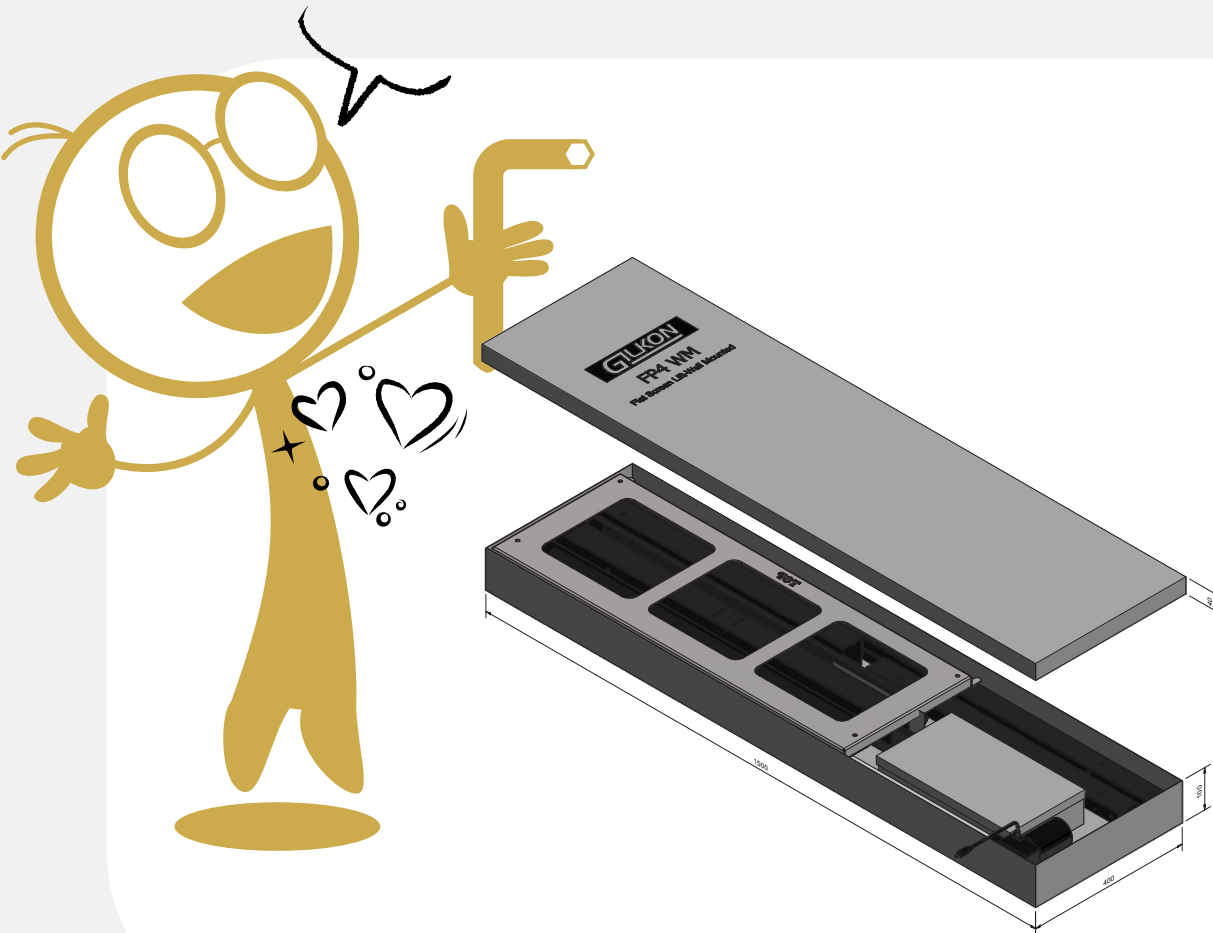


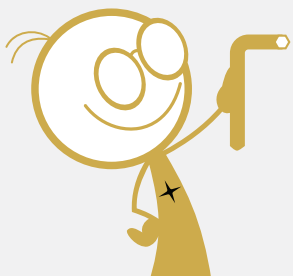
FP4 WALL MOUNT - ASSEMBLY INSTRUCTIONS

IF YOUR READING THIS THEN YOU ARE ON THE RIGHT STEP TO BEGIN

Thank you for purchasing the **Gilkon FP4 WALL MOUNT** with **Power Lift**.

" Hi! I am '**OP**' and I'm here to help you assemble it - Careful lifting, it weighs 34.9kg"

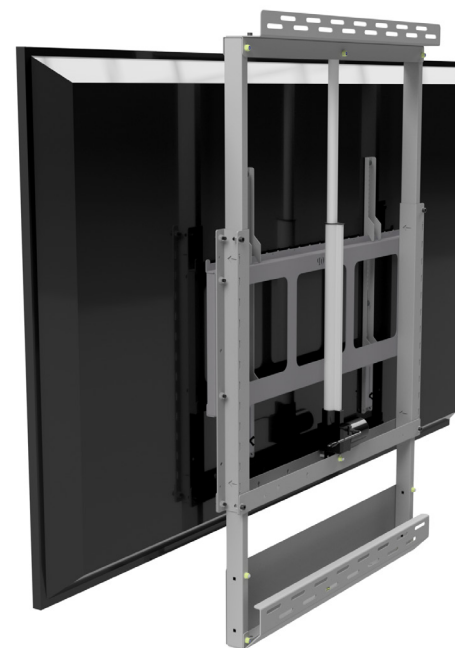
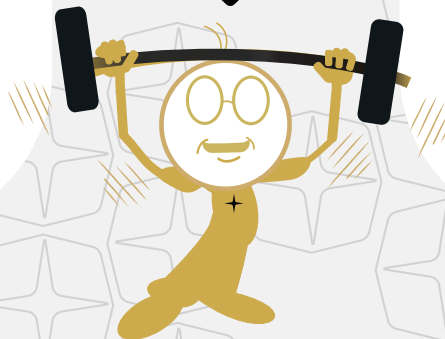
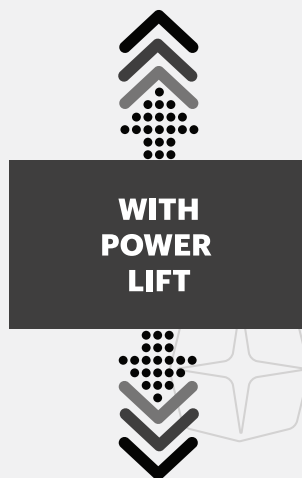




The **Gilkon FP4 Wall Mount** includes the "**Power Lift**" and can be easily raised and lowered to your preferred viewing height.



*AV Monitor screen not included

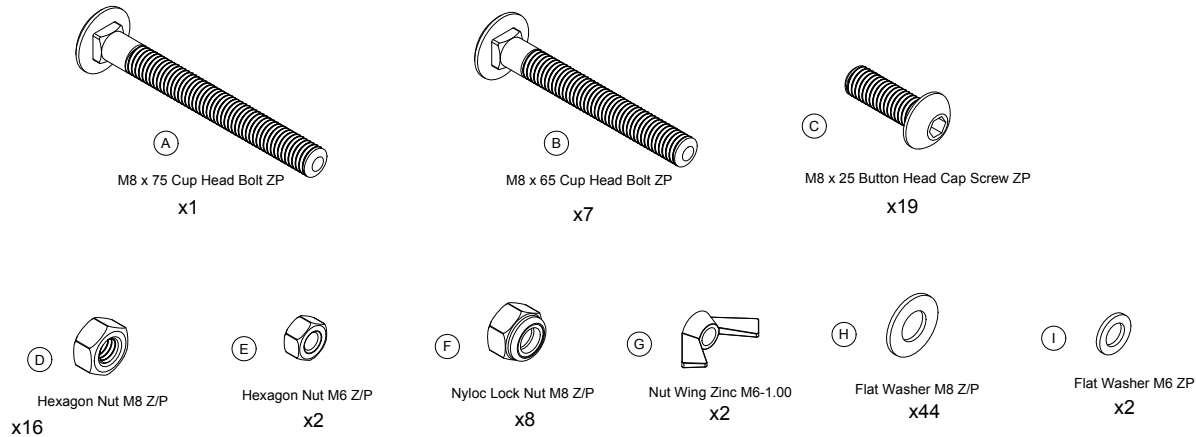


*AV Monitor screen not included

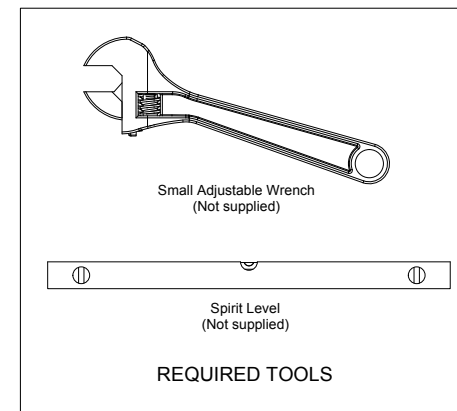
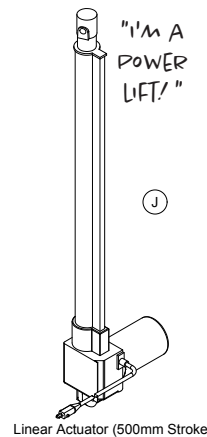
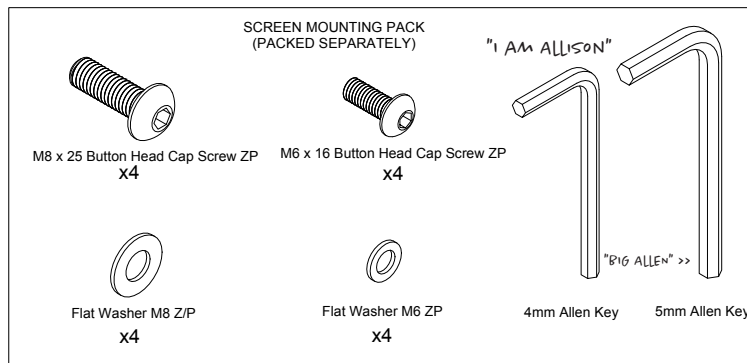
STEP 1 - PARTS AUDIT

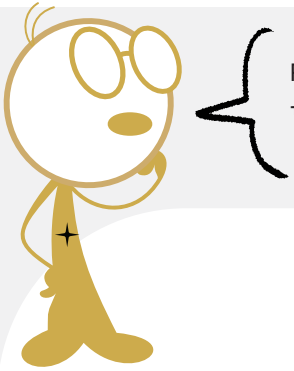
Make sure you have got all the parts listed and take note of the sizes and sort - We have supplied 2 trusty Allen Keys. We call them **"Big Allen"**, and **"Allison"**.

You will also need to have YOUR OWN small adjustable wrench and spirit level, plus suitable wall fixtures for your wall type.

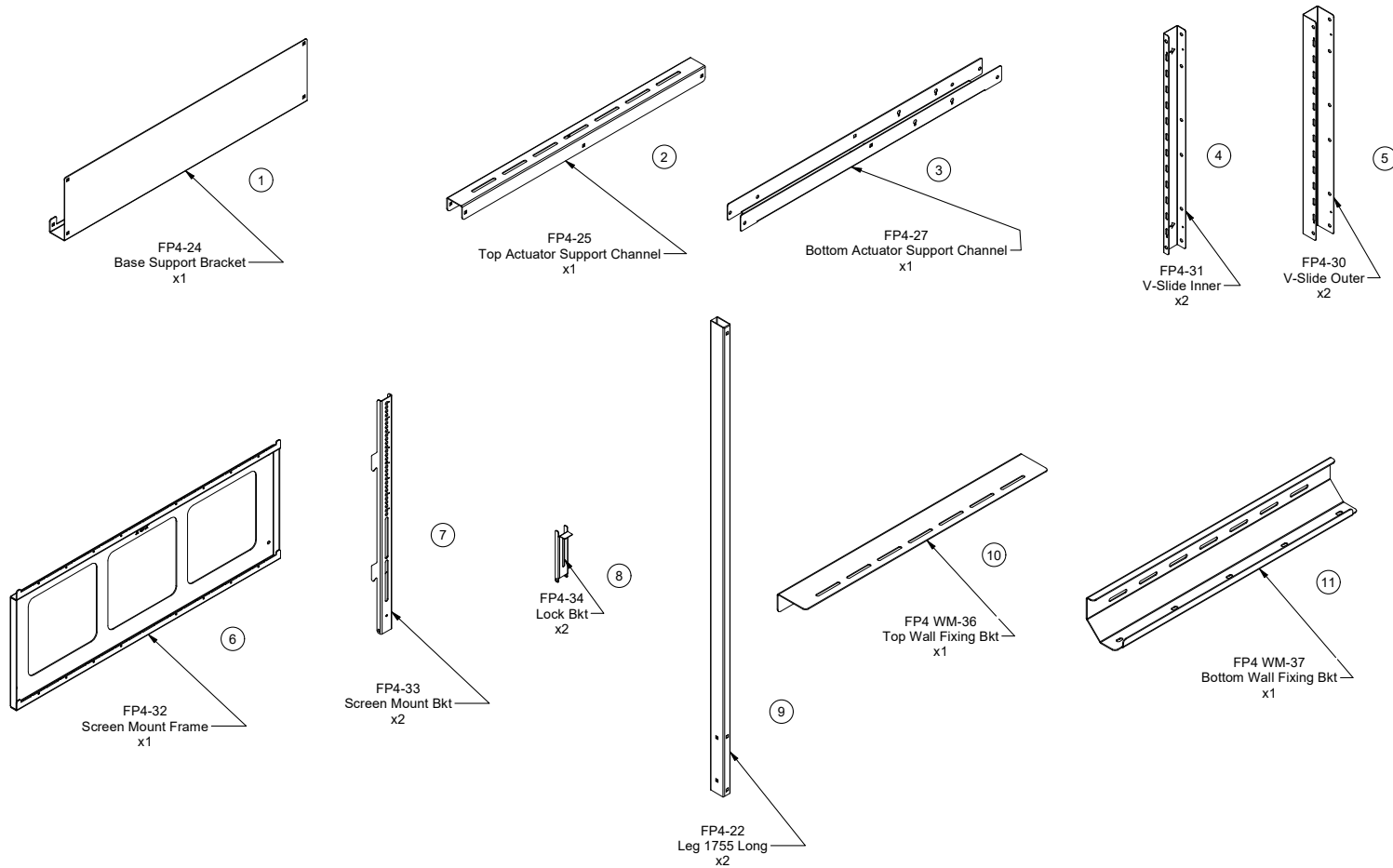


VIEW SCALE (1 : 1) ALL FASTENERS





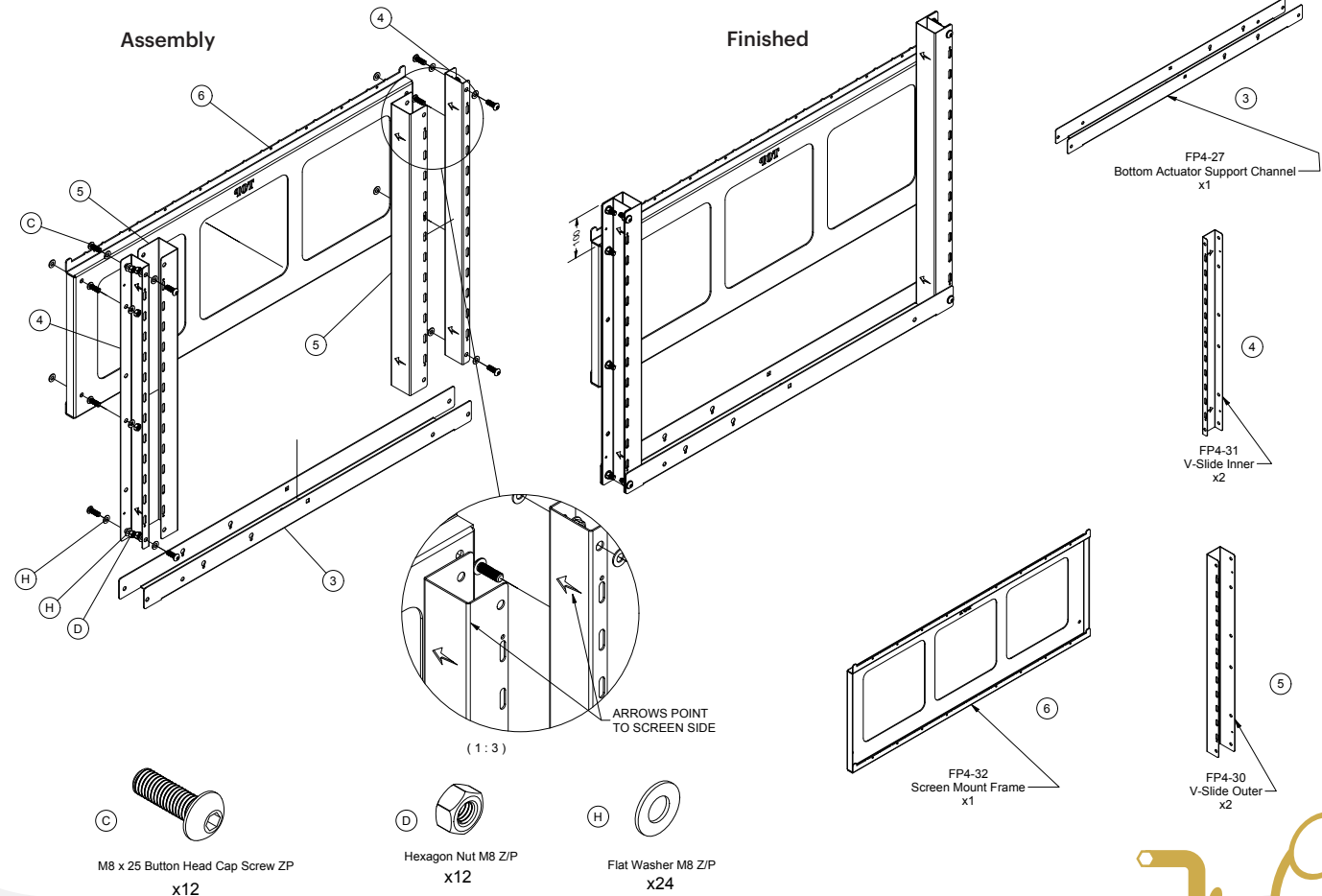
Please sort the **FP4 Wall Mount** primary parts on a clear flat surface and take note of the **pressed arrows** and their orientations on Frame Parts as they are important.



Please Note: Check Parts ④ & ⑤ arrows on the drawing that indicate specific orientation match the drawing indicated pointing to the screen side.

- Gather the components listed in the drawing, including:
 - ⑤ M8 x 20 Socket Head Cap Screw x12
 - ⑥ Hexagon Nut M8 Z/P x 12
 - ⑦ Flat Washer M8 Z/P x24
 - ③ Bottom Actuator Support Channel
 - ④ V-Slide Inner
 - ⑤ V-Slide Outer
 - ⑥ Screen Mount Frame
- Create the side assembly by attaching **V-Slide Inner** ④ inside **V-Slide Outer** ⑤ for left and right with screws ⑤ and nuts ⑥ and washers ⑦ at the corners of the **Screen Mount Frame** ③ (performed concurrently).
- Screen Mount Frame** ⑥ attaching it to the left and right **V-Slides** ④ & ⑤ the corners by inserting the screws ⑤ through the designated holes and fastening them with the corresponding nuts ⑥ and washers ⑦.
- Secure the **Bottom Actuator Support Channel** ③ to the left and right ④ **V-Slide** ④ & ⑤ the corners of part by inserting the screws ⑤ through the designated holes and fastening them with the corresponding nuts ⑥ and washers ⑦.

Take a big, deep breath and plan your steps - check that the arrows are facing the right way!



Excellent Work! In finishing this step you have completed the AV Mount Assembly



Please Note: Look for **arrows** on parts that indicate specific orientation and match the direction indicated.

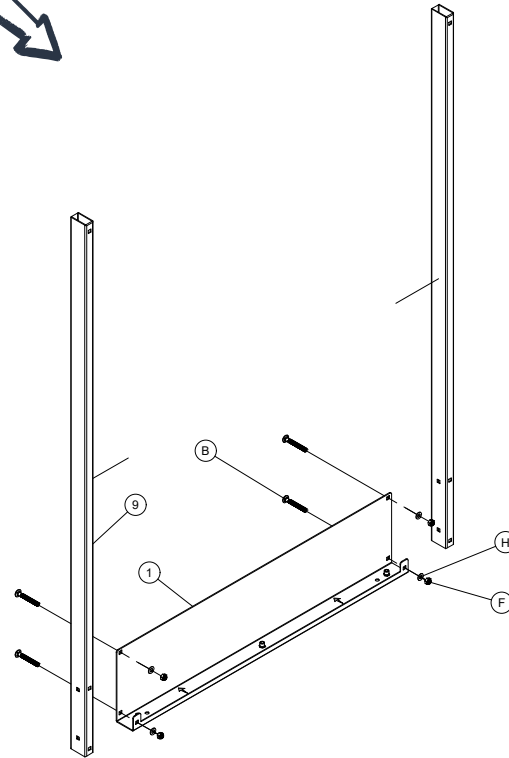
1. Gather components listed in the drawing, including:
 - Ⓒ M8 x 65 Cup Head Bolt Z/P (x4)
 - Ⓓ Nyloc Lock Nut M8 Z/P (x4)
 - Ⓗ Flat Washer M8 Z/P (x4)
 - ⑨ Leg 1755 Long
 - ① Base Support Bracket

2. Begin by aligning the **Leg 1755 Long ⑨** to the **Base Support Bracket ①**.

3. Insert the M8 x 65 Cup Head Bolts Ⓑ through the designated holes in **Leg 1755 Long ⑨**, ensuring they are properly aligned.

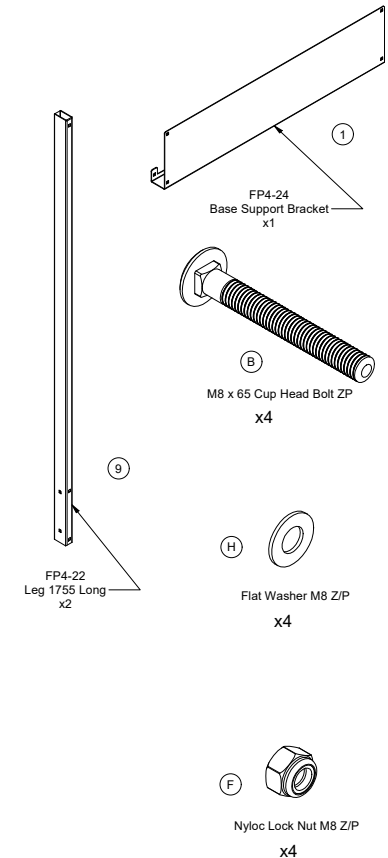
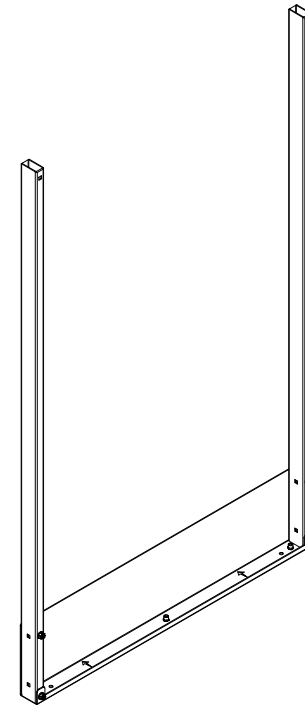
4. Secure the **Leg 1755 Long ⑨** with Flat Washers Ⓗ on the bolt Ⓑ before securing them with the nuts Ⓕ to provide additional support and prevent damage to the **Base Support Bracket ①**.

Assembly



(1:8)

Finished



Fantastic! In doing this step you are half way to assembling the Slider.

Let's put it all together and let it stand ready to move up and down

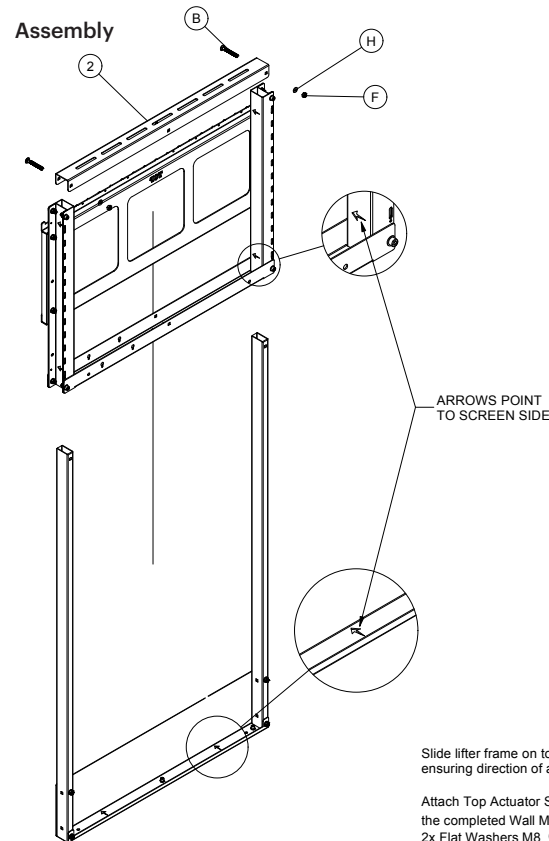
Please Note: Check Part ④ & ⑤ arrows on the **Wall Mount Assembly** that indicate specific orientation match the arrows on the **"Stand Slider Assembly"**

1. Gather the necessary components listed in the drawing, including:

- ⑧ M8 x 65 Cup Head Bolt Z/P (x2)
- ⑥ Nyloc Lock Nut M8 Z/P (x2)
- ④ Flat Washer M8 Z/P (x2)
- ② Top actuator support channel
- + Wall Mount Assembly (complete)
- + Slider Assembly (complete)

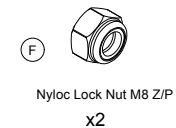
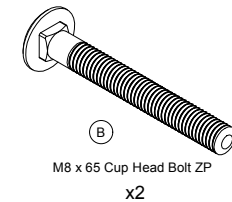
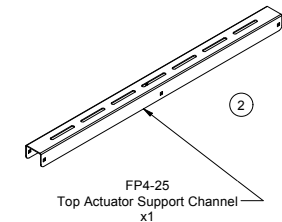
2. ④ Place the Washers ④ on the bolts ⑧ before securing the **Top actuator support channel** ② To the top of the **Wall Mount Assembly** secure with M8 bolts ⑧ & Nyloc nuts ⑥ and washers ④.

3. Carefully Slide the completed **Wall Mount Assembly** down the **Slider Assembly** until it comes to a resting point, Checking orientation of the arrows to match indicated direction.



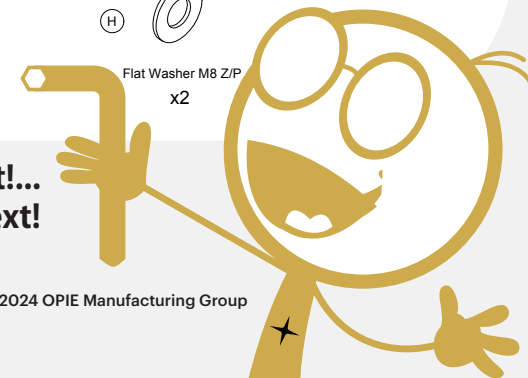
Slide lifter frame on to the Wall Mount Frame ensuring direction of arrows align. Allow to rest at bottom of frame.

Attach Top Actuator Support Channel ② to the top of the completed Wall Mount Frame with 2x M8 x 65 Cup Head Bolts ⑧, 2x Flat Washers M8 ④, and 2x Nylock Lock Nuts ⑥



IT SHOULD LOOK LIKE THAT PICTURE THERE

It would be even easier to raise and lower with a Power Lift!...
Let's install it next!



Place bolt ⑥ into the center hole on the **Top actuator support channel** ② and fix the **Power lift actuator** ① on the rear side of the **WALL MOUNT ASSEMBLY**.

Fix the bottom of the **Power lift Actuator** with Bolt ④.

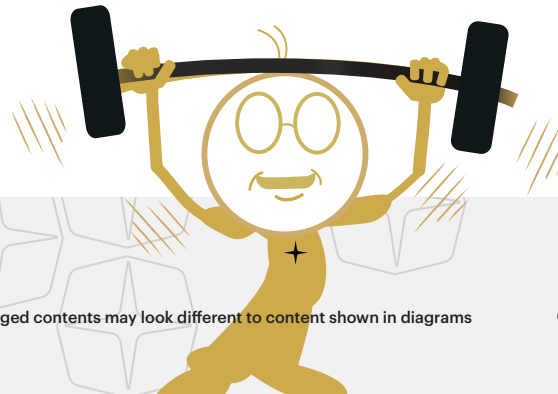
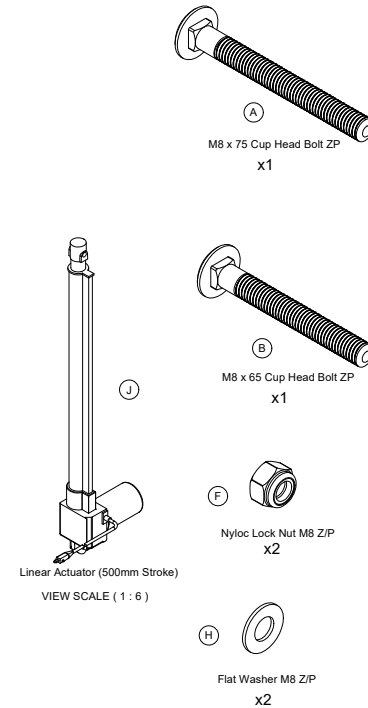
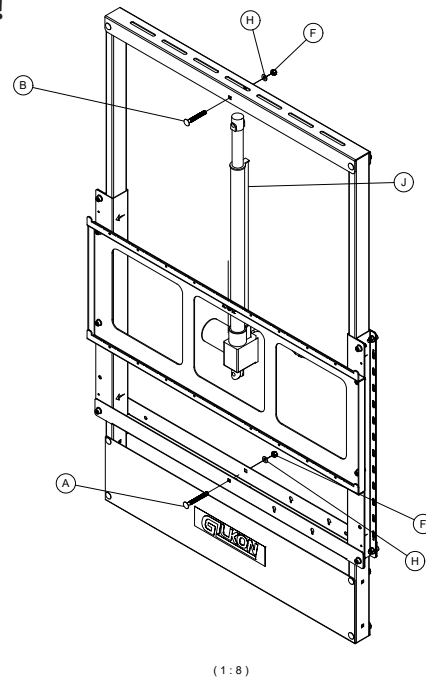
Use ⑦ washers and **Nyloc Nuts** ⑤ as indicated to secure the **Power lift Actuator** ① to the bolts ④ and ⑥.

Tighten with your Spanner!

Let's install
Power Lift next!



WITH
POWER
LIFT



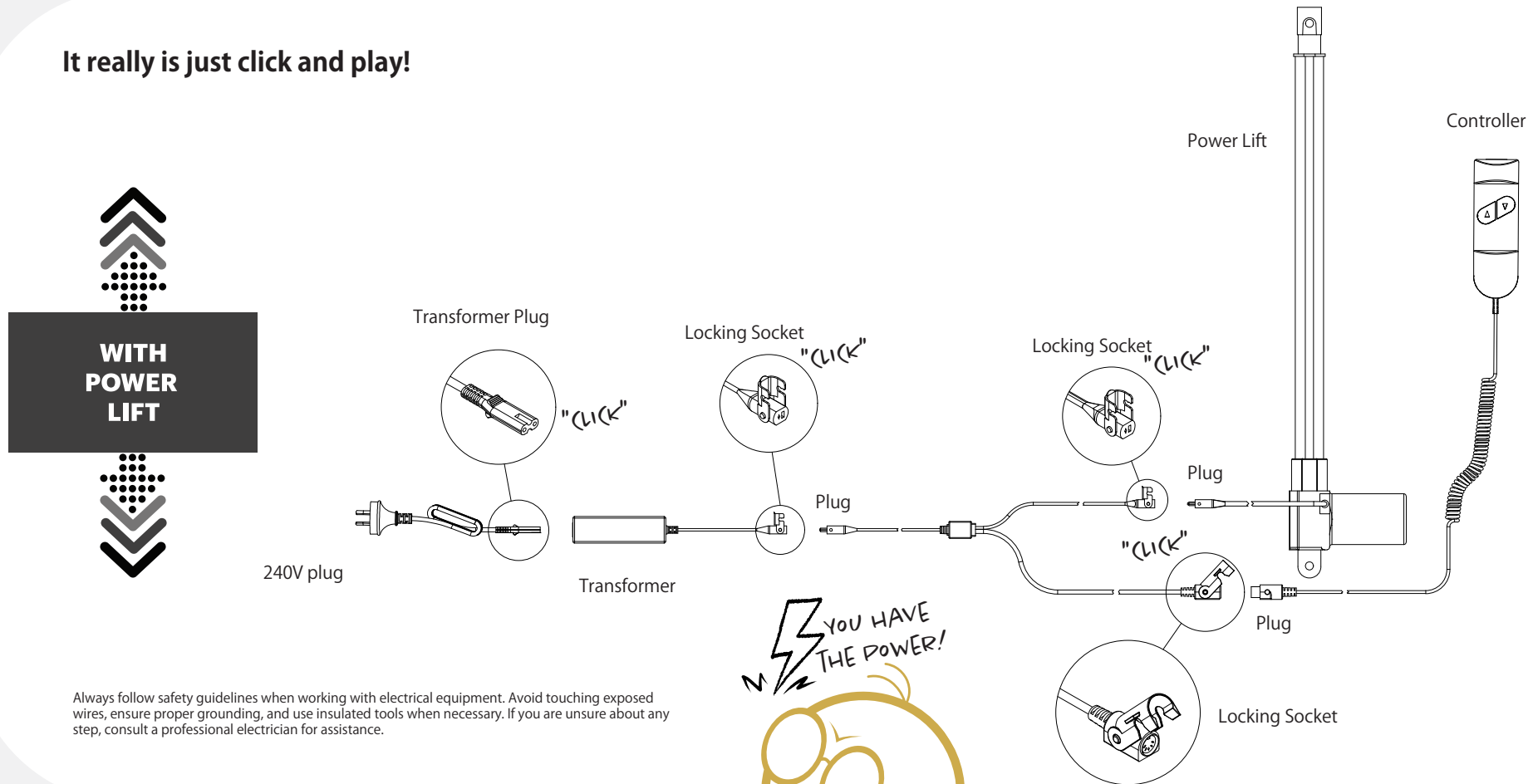
Now it needs the power cord!

Click Plugs and Sockets: Some sockets come with locking mechanisms to hold the connection. Match the **Locking Sockets** with the plugs correctly and join; listen for a "click" sound to ensure the connection is secure.

Plug into 240V: Ensure that the power source you are plugging into is a **240V outlet**.

Testing with Controller: Before operating the equipment, test the lift with the wired **Controller**. Press the Up▲ and Down▼ buttons to verify that the lift functions correctly and responds to the controller's commands.

It really is just click and play!



Always follow safety guidelines when working with electrical equipment. Avoid touching exposed wires, ensure proper grounding, and use insulated tools when necessary. If you are unsure about any step, consult a professional electrician for assistance.

Time to get your monitor unpacked and face down ?

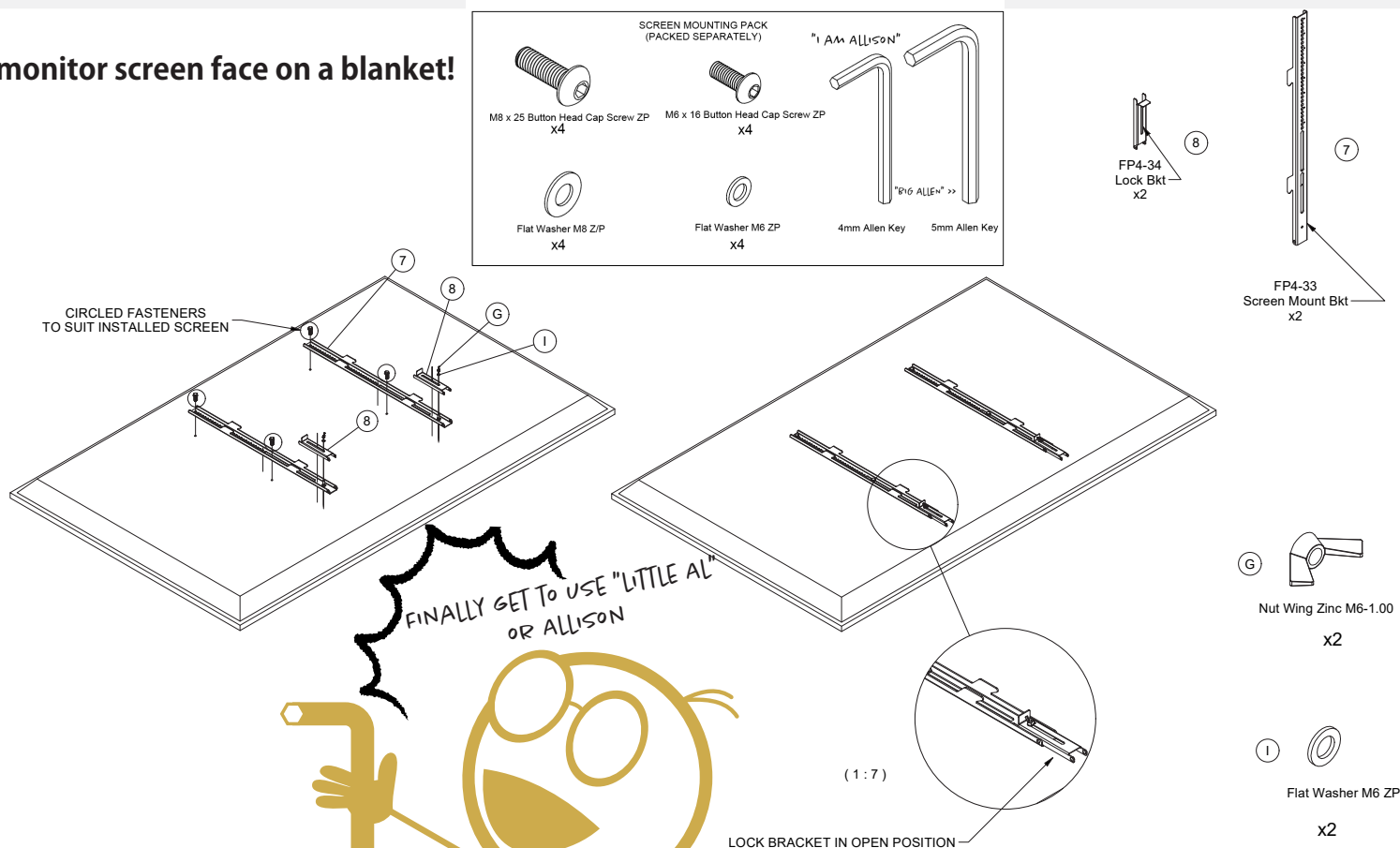
FP4 WALL MOUNT - ASSEMBLY INSTRUCTIONS

STEP 8 - INSTALL LOCKING BRACKET AND MONITOR BRACKET

Locking Bracket ⑧: Slide **Locking Bracket ⑧** at the bottom of the **Screen Mount Brackets ⑦** and secure with **Wing Nut ⑥** and **washers ①** (Leave **Locking Bracket ⑧** in open position).

Screen Mount Brackets ⑦: Attach the two **Screen Mount Brackets ⑦** to your monitor or screen using instructions provided with your Monitors accompanying manual. Use the appropriate screws, nuts, and washers from the **Screen Mounting Pack ⑦** for installation to your monitor.

Lay your monitor screen face on a blanket!



So close now, it's exciting, isn't it?

FP4 WALL MOUNT - ASSEMBLY INSTRUCTIONS

STEP 8 - INSTALL LOCKING BRACKET AND MONITOR BRACKET

- 1 Brackets:** Fix the **Bottom Wall Fixing Bracket** ⑪ 200mm from floor, ensure you use the correct wall fixings for your specific wall type. Secure the **Top Wall fixing bracket** ⑩ to the top of the FP4 frame (see figure 2)
- 2 Positioning:** Carefully lift and place your **Gilkon FP4 wall Mount assembly** into the **Bottom Wall Fixing Bracket** ⑪ raising it flush with the wall (Mark its fixing position on the wall with the top bracket).
- 3 Final Fix:** Once satisfied, secure the **Gilkon FP4 wall Mount assembly** in the correct position using the correct wall fixture for your wall type (**not provided**), utilizing the **Top Wall Fixing bracket** ⑩.

PLEASE NOTE:

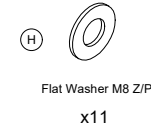
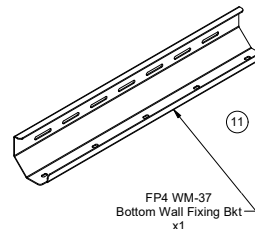
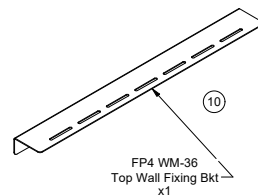
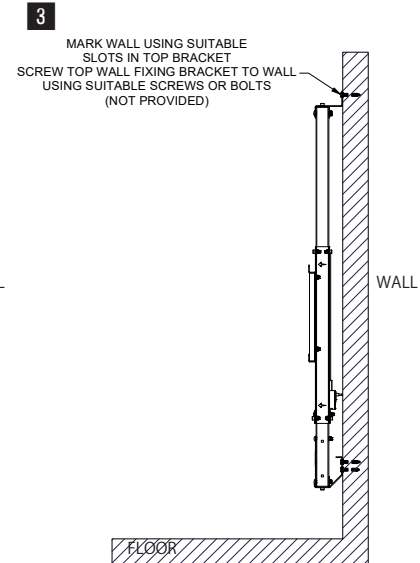
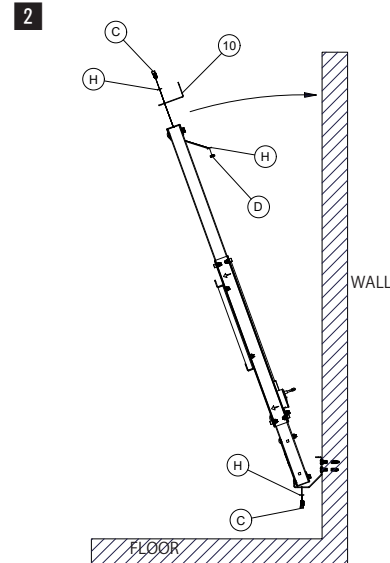
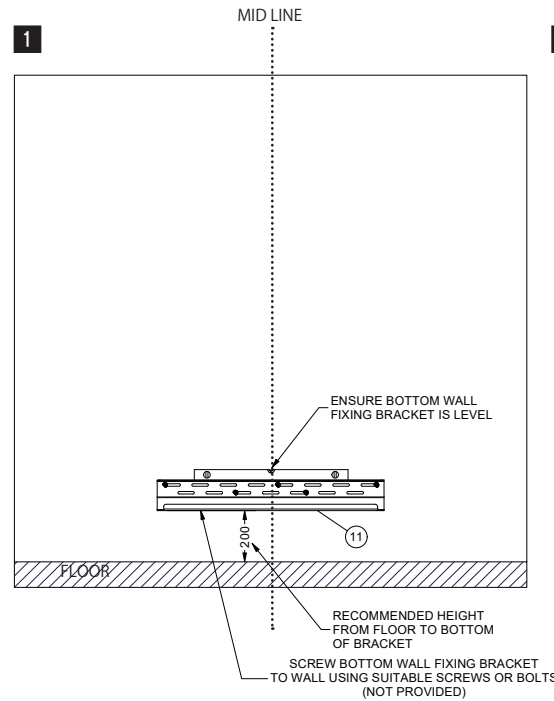
Carefully plan how you will position the frame to wall and assess its suitable location to power.

Assess your wall type and obtain the correct wall fixings (not supplied) for your wall.

Calculate your wall fixing capacity to hold an FP4 wall mount frame weight of 34.8 kg plus your flat panel weight combined.

To ensure it is level - use a level.
(not supplied)

LEVEL IT ALL UP



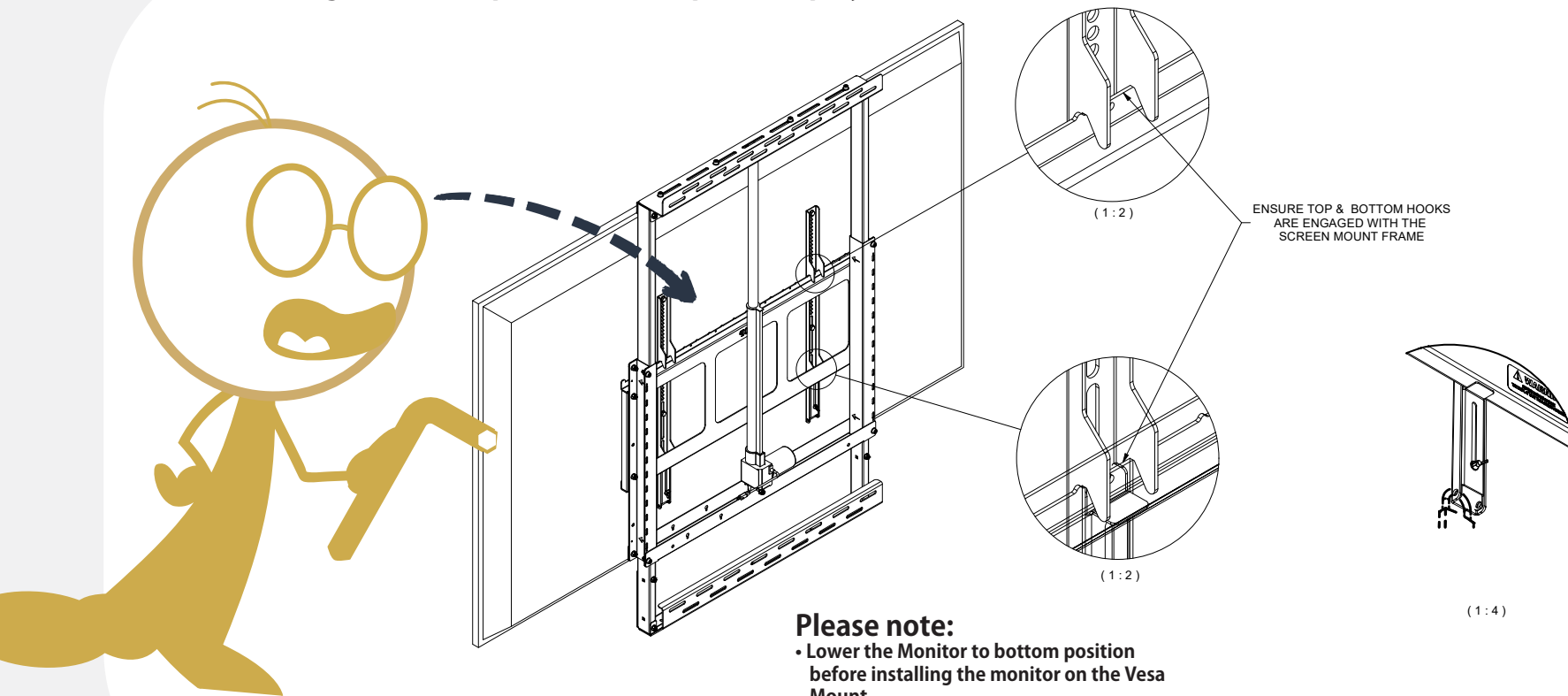
Bet it looks great on your wall?

Vesa Mount: Confirm that your monitors brackets match the correct width of the **Vesa Mount** indicator holes.

Mount Flat Panel Display: Position your flat screen panel monitor on your slotting to **Vesa Mount** indicator holes.

Test Power Lifter: Plug the **Power Lift Actuator** 240V plug into Power to test and position your monitor to preferred height.

Time to get some help to lift the flat panel display onto the Vesa Mount.



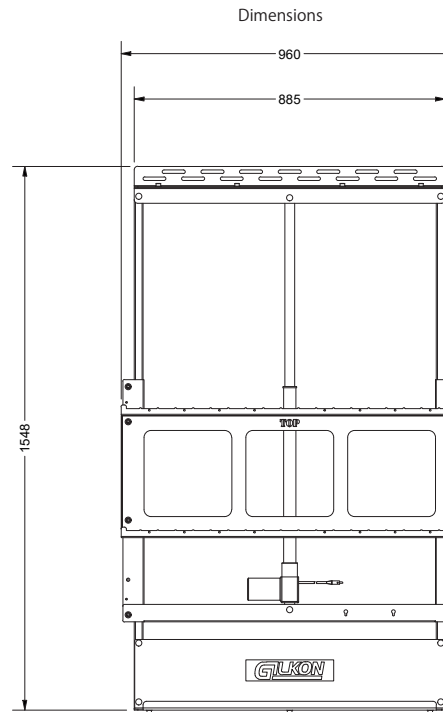
Please note:

- Lower the Monitor to bottom position before installing the monitor on the Vesa Mount
- Ensure the Monitor is fixed and securely Locked with lock Brackets L & R

DETAIL VIEW SHOWING SCREEN LOCK BRACKET IN POSITION
8mm HOLE SUITS PADLOCK UP TO 7mm SHACKLE
(PADLOCK NOT SUPPLIED)

Wonderful work!

Congratulations on your assembly!
Thanks for supporting Australian Manufacturing



WEIGHT: 34.8 l

Well done! - Enjoy your FP4 Wall Mount for flat panel display!